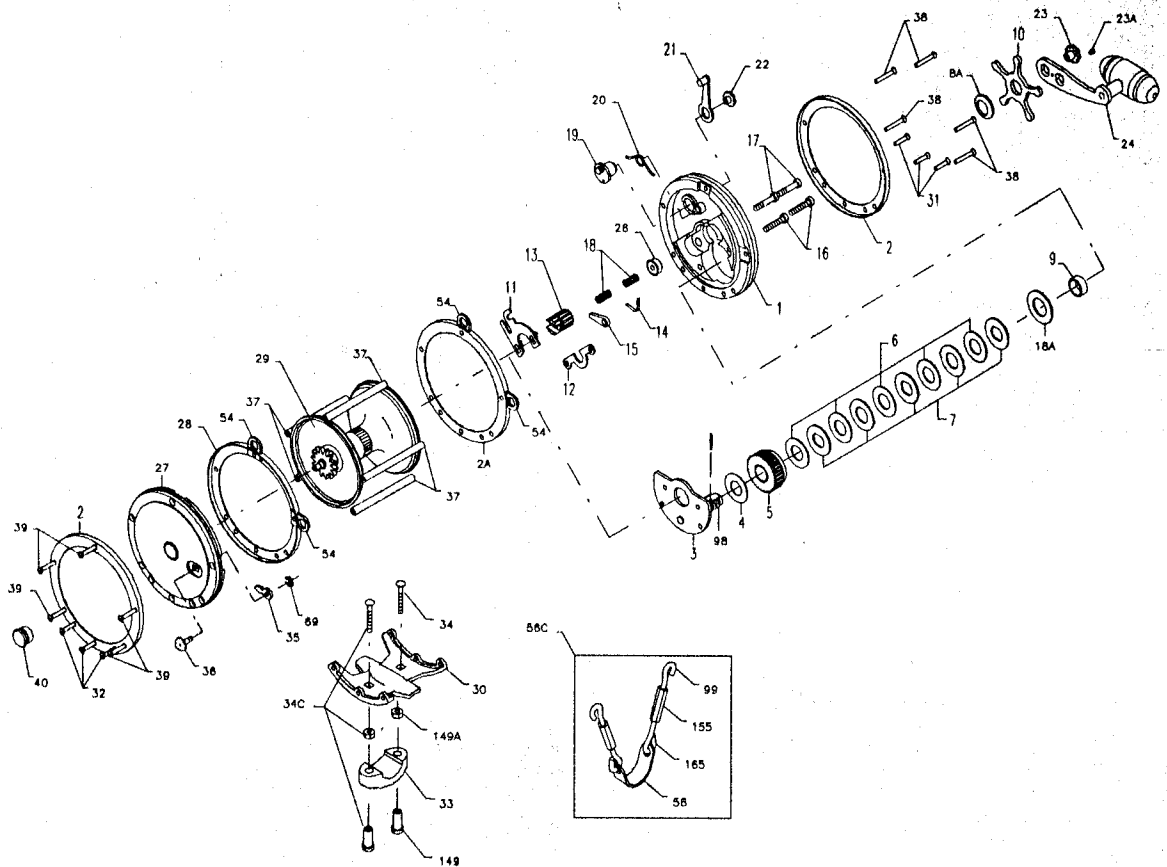




# PARTS AND PRICE LIST FOR MODEL 115L



KEY No.	PART No.	Description	Price	KEY No.	PART No.	Description	Price
1	001 115	Right Side Plate	\$11.30	27	027 115	Left Side Plate	\$12.80
2	002 115O	Side Plate Ring-Outer	8.05	28	028 115I	Left Side Ring Inner	8.05
2A	002 115I	Right Side Ring-Inner	8.05	29	029L115	Spool-Aluminum	61.00
3	003 115	Bridge w/Sleeve	11.85	30	030 115	Stand	12.25
4	004 115	Fiber Washer	.80	31	039 012	R.S. Stand Screw (3 req.)	.50
5	005 115	Main Gear	8.30	32	039 021	R.S. Stand Screw (3 req.)	.50
6	006 115	Drag Washer (5 req.)	1.25	33	033 340	Rod Clamp	5.50
7	007C115	Metal Drag Washer Set	5.00	*033R114		Ringed Rod Clamp (Optional)	9.95
8	008 114	Tension Spring	1.10	34	034 045	Clamp Screw (2 req.)	1.00
8A	008 115	Tension Spring	1.10	34C	034C045	Rod Clamp Screw w/Nuts	2.50
9	009 114	Spacing Sleeve (Set of 3)	1.50	35	035 115	Click Tongue	1.25
10	010 114	Star Drag Wheel	4.40	36	036 115	Click Button	1.80
11	011 115	Eccentric Jack	3.05	37	037 115	Frame Post (5 req.)	2.40
12	012 114	Pinion Yoke	1.80	38	039 013	R.S. Post Screw (5 req.)	.50
13	013 114	Pinion	5.10	39	039 012	L.S. Post Screw (5 req.)	.50
14	014 116	Dog Spring	.50	40	040 114H	L.S. Bearing	12.95
15	015 115	Dog	1.50	54	054 114	Harness Lug (4 req.)	1.75
16	016 114	Bridge Screw Lower (2 req.)	.55	56	056 116	Rod Brace (Only)	5.95
17	017 114	Bridge Screw Upper (2 req.)	.55	56c	056C115	Rod Brace Complete	14.05
18	018 114	Clutch Spring (2 req.)	.50	69	069B600	Retaining Ring	.90
19	019 115	Eccentric	3.05	98	098 114	Gear Sleeve	5.00
20	020 114	Eccentric Spring	.85	99	099 115	Hook Screw L.H. Thread (2 req.)	1.25
21	021 114	Eccentric Lever	2.25	140	*140 115	Felt Washer	.50
22	023 060	Eccentric Screw	1.75	149	149 045	Clamp Nut (2 req.)	1.00
23	023 116	Handle Screw	3.10	149A	149 200	Hex Nut (2 req.)	.50
23A	110 060	Handle Lock Screw	.45	155	155 115	Turn Buckle (2 req.)	1.55
24	024 115	Handle	11.75	165	165 115	Hook Screw R.H. Thread (2 req.)	1.25
26	026 116	R.S. Bearing	12.50				